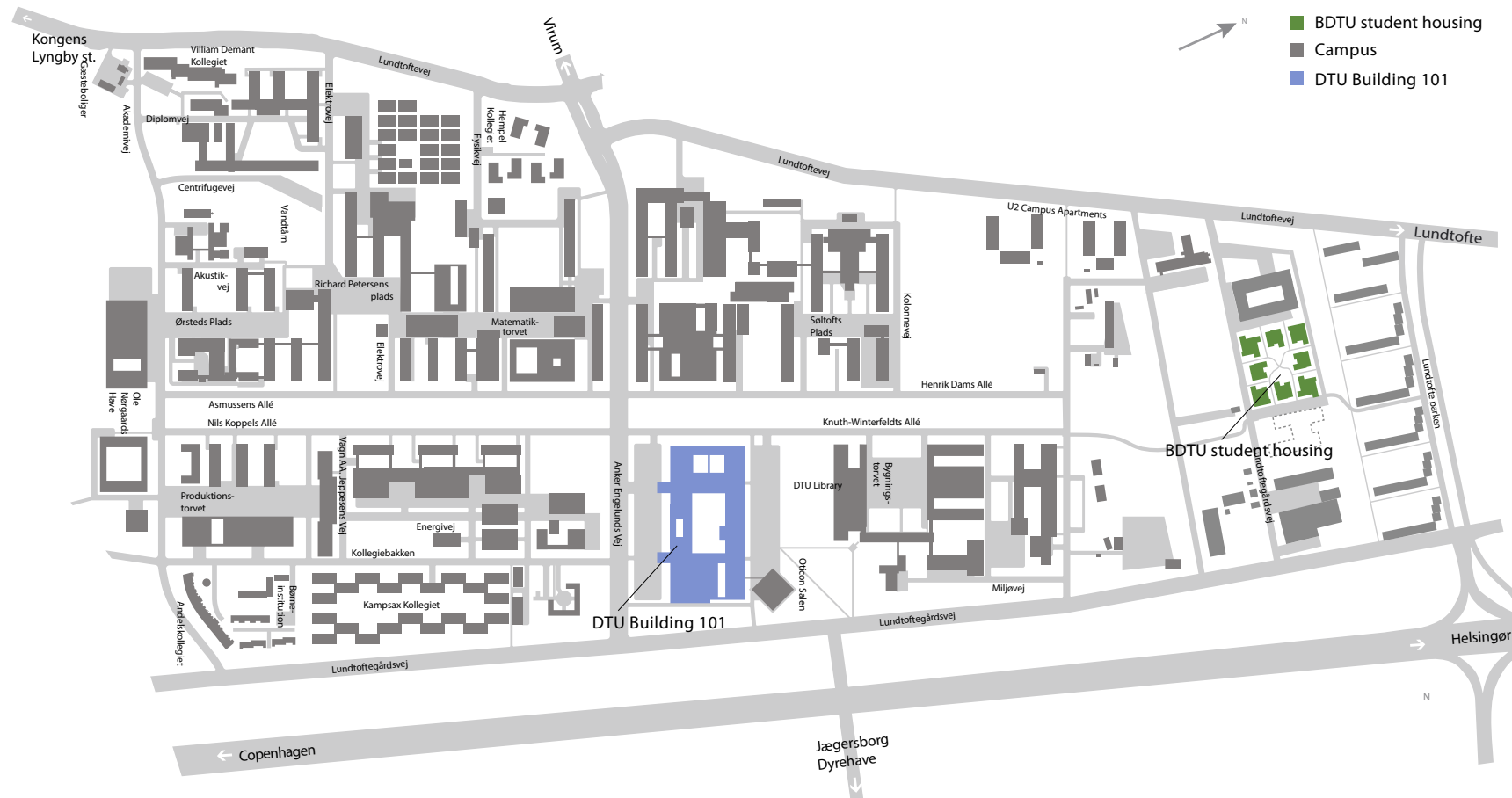


Sustainable student housing close to DTU in Lundtofte

Boligfonden DTU are building new sustainable DGNB certified student housing close to DTU in Lundtofte.

The first phase of 126 accommodations are scheduled to open by medio-August 2020.

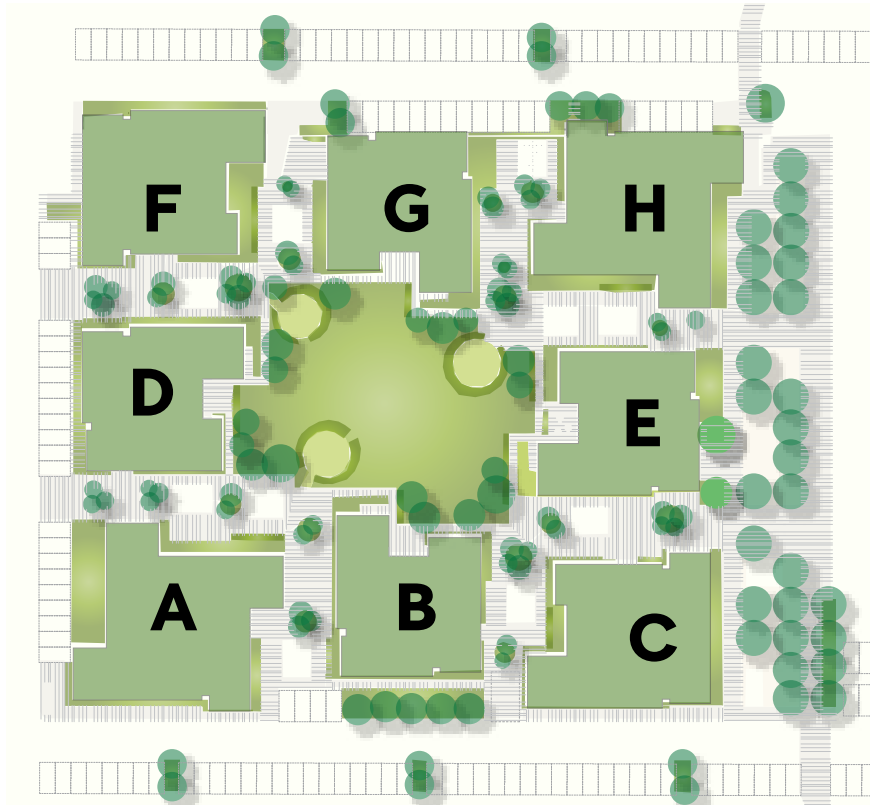




Location and contact

Located directly north of DTU, the new accommodations enjoy easy access to Campus and public transportation to Copenhagen, thus enhancing the student life experience.

Please contact Boligfonden DTU for further inquiries:
acco@adm.dtu.dk



Plan of habitations, buildings A-H



View towards the entrance of the area

Apartments and studios

A total of 8 buildings comprise 416 studio apartments, 31 single rooms, and 44 small two-bedroom apartments that will open for students during the next 18 months.

Green surroundings

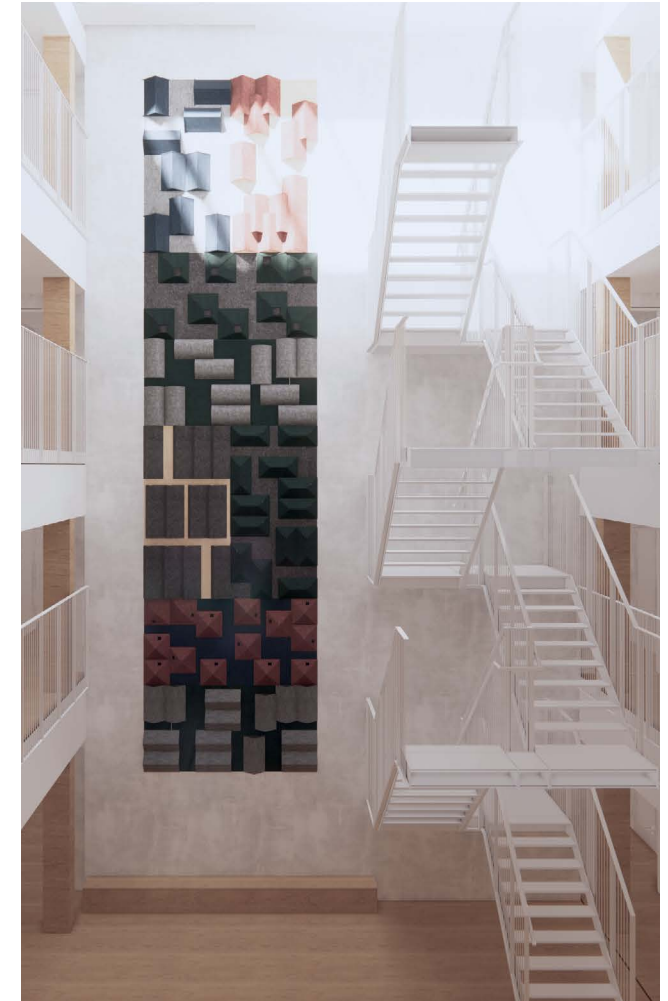
The greenery surrounding the buildings provide an inviting and comfortable atmosphere for the residents, and is part of our efforts to present an attractive housing option at affordable prices.

In addition to the green space assembling the area, each building has a 'green' rooftop terrace where the inhabitants can gather for social events, to read or simply hang out.





Shared kitchen



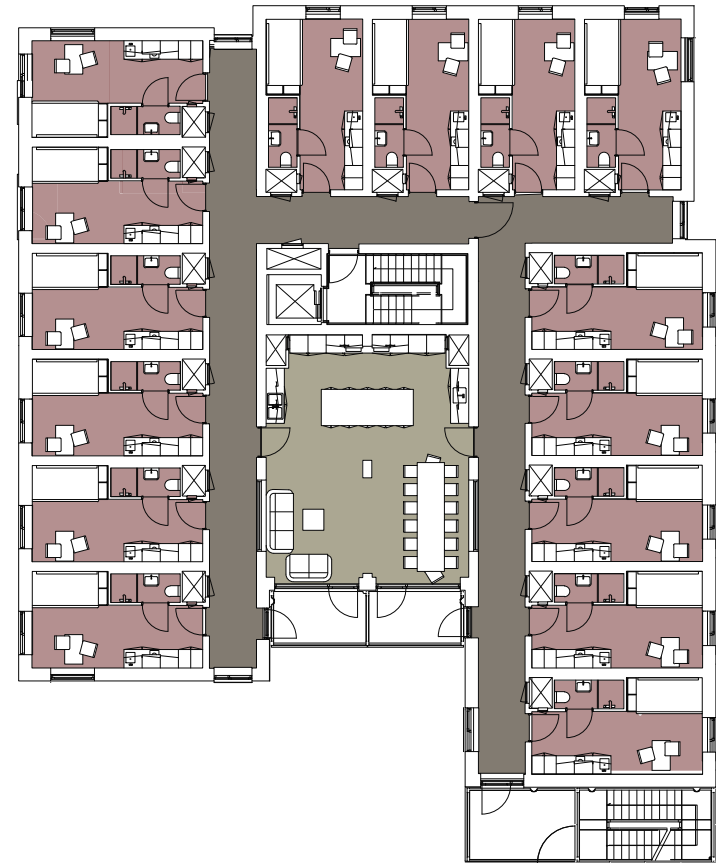
Atrium

Shared facilities

All accommodations have access to a type of common area. The shared facilities will vary from building to building. Some of them hold shared kitchen areas, while others will have open common areas, which offer light and space.



Example of floor plan with an atrium in the heart of the building surrounded by studios and shared apartments.



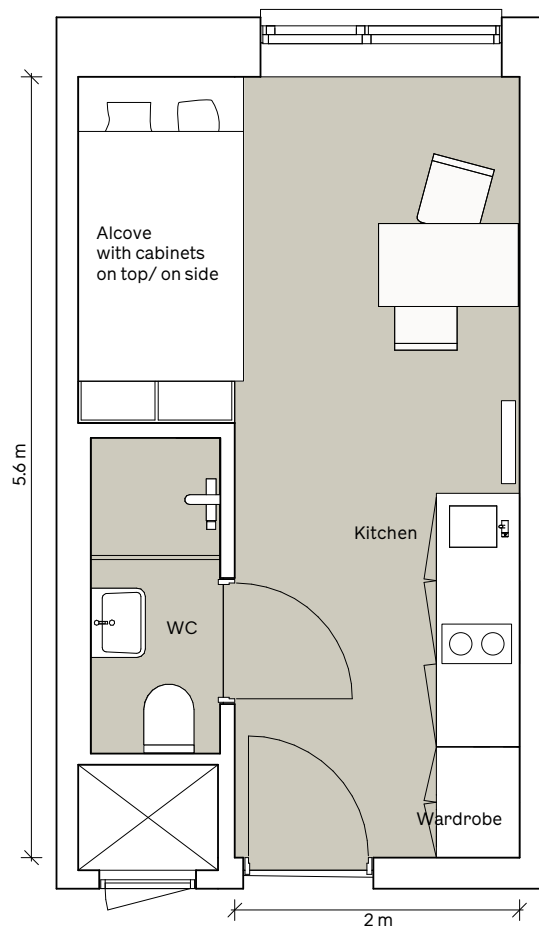
Example of floor plan with a shared kitchen and living room in the heart of the building surrounded by studios.



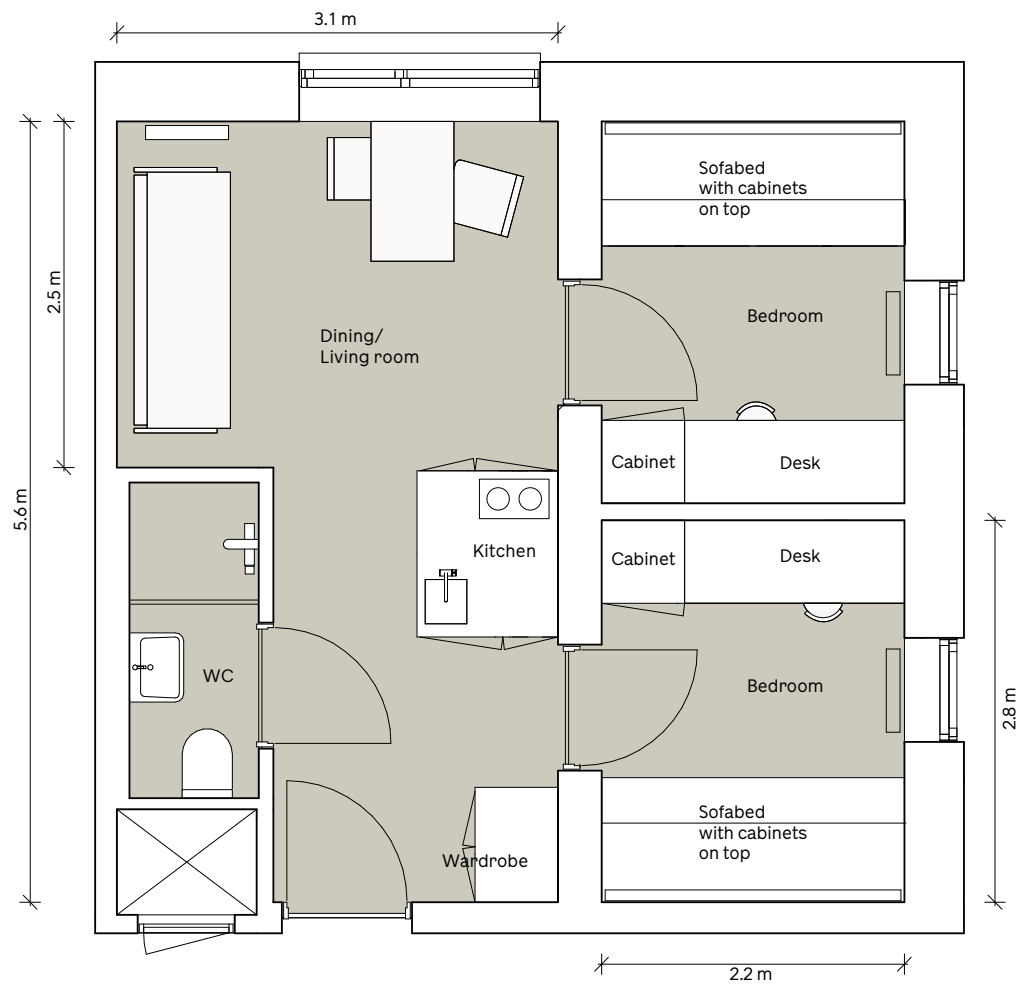
Single room with example of furnishings

Studios and rooms

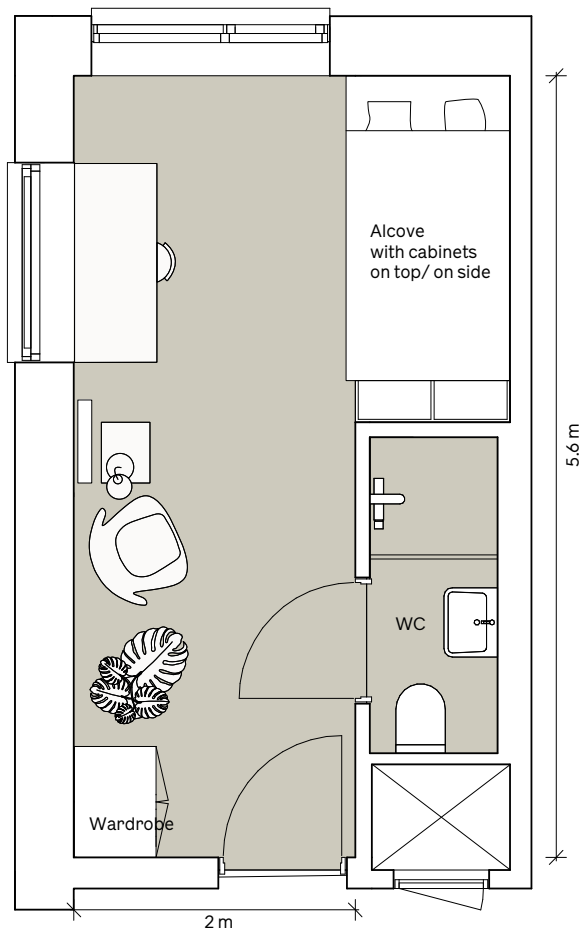
All accommodations are one-room studio apartments or rooms with en-suite baths. The studios have private kitchens, while the rooms have shared kitchen facilities. The two-room apartments are ideal for friends or partners to share. They consist of two small bedrooms, a bathroom and kitchen as well as a small living room space.



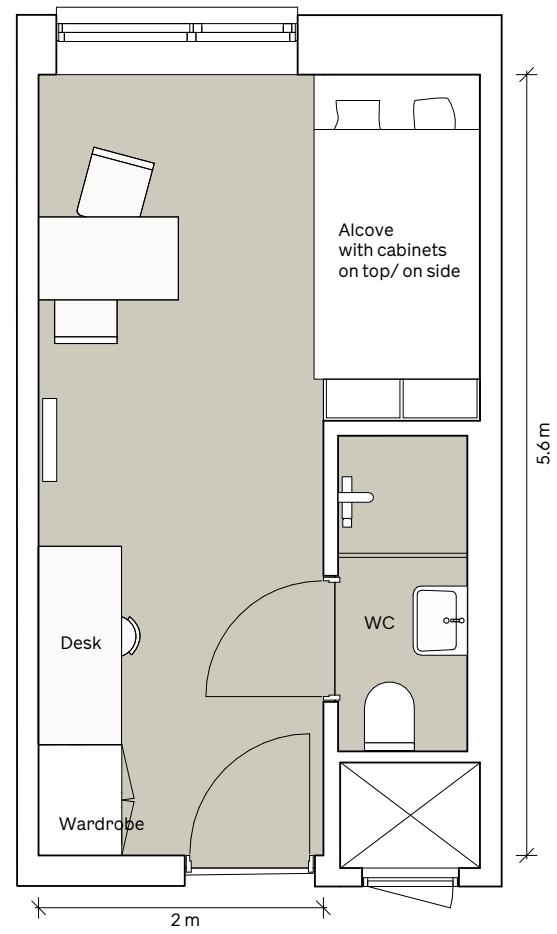
Example of accommodation;
Studio with kitchen



Example of accommodation;
Shared apartment



Example of accommodation;
Single room



Example of accommodation;
Single room