

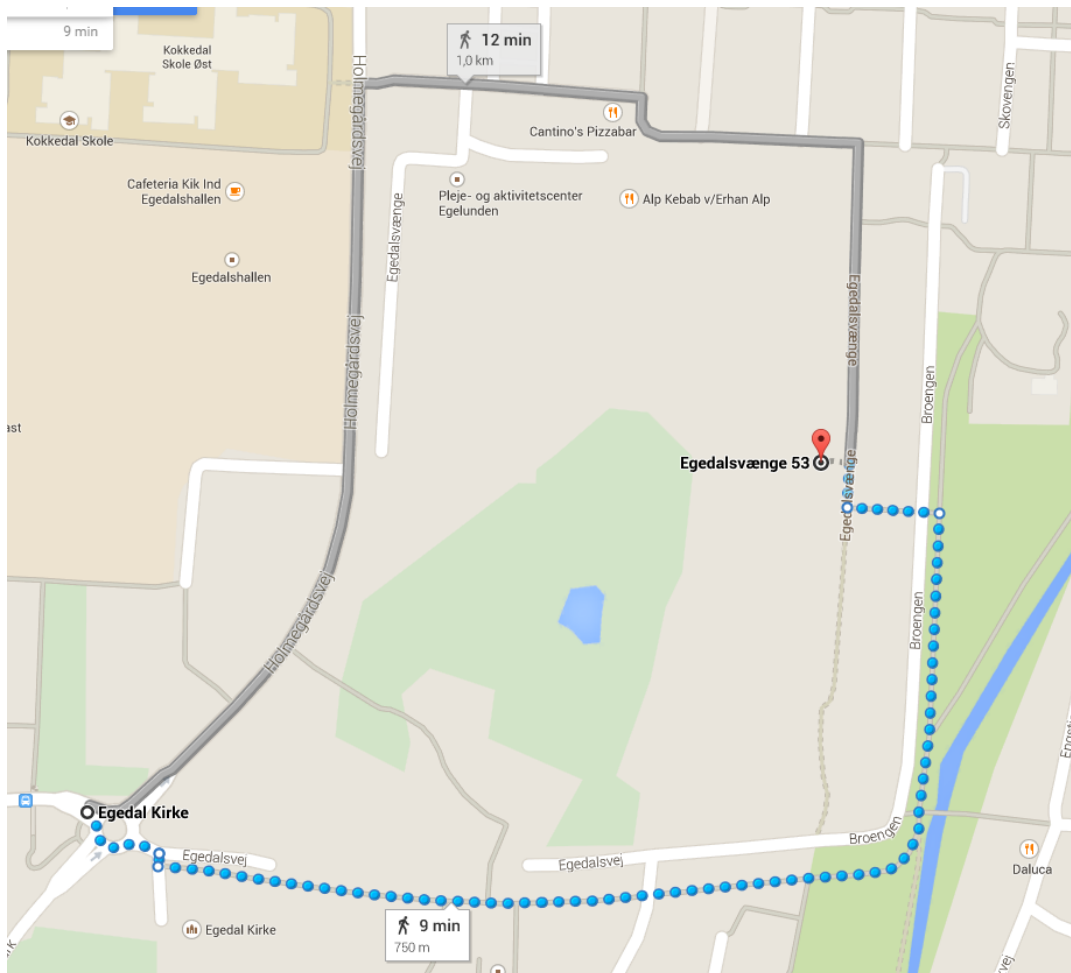
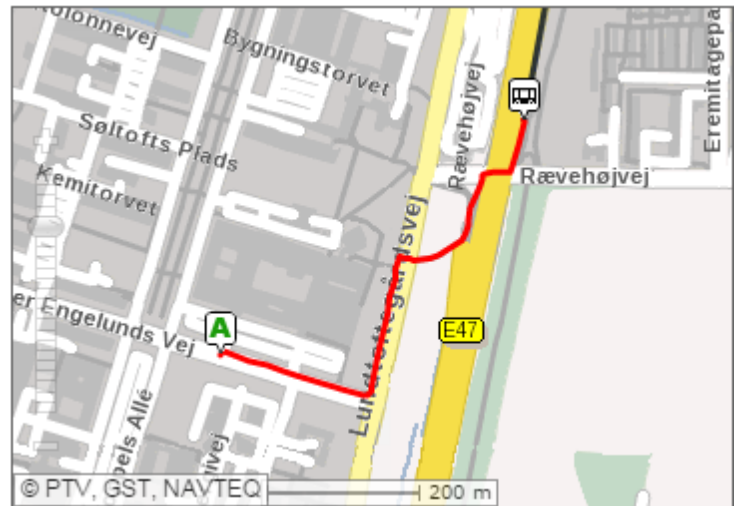


# LIVING IN EGEDALSVÆNGE KOKKEDAL



**Directions to Egedalsvænge, Kokkedal from DTU**

1. Walk to the bus stop at **Rævehøjvej, DTU** (north going stop, see figure to the right).
  2. Take **bus 150S** toward **Kokkedal St.**
  3. Buy a ticket for **3 zones**.
  4. Get off at **Egedal Kirke**
  5. Walk from Egedal Kirke to Egedalsvænge (see figure below).
- Total travel time: 40-50 minutes.





## Webpage for public transport information

[https://www.rejseplanen.dk/webapp/index.html?language=en\\_EN](https://www.rejseplanen.dk/webapp/index.html?language=en_EN)

## Your Accommodation

Egedalsvænge is a housing complex in the town of Kokkedal, 18 km. north of DTU, Lyngby. We have approximately 40 apartments for international DTU students so you will have plenty of opportunity to be with other students both at the DTU campus and at your accommodation. There is also a facebook group you may want to sign up for. Most of the apartments that the Accommodation Office handles are single room apartments. We also manage a number of double room apartments. The address of the accommodation is:

Egedalsvænge 3-73  
2980 Kokkedal

Your room has its own bathroom and kitchen/kitchenette.

Since each apartment has its own kitchenette, you are eligible to apply for boligstøtte, which is a public social aid for people who rent. Information can be found on

<https://www.borger.dk/Sider/Boligstoette-oversigt.aspx>

## Your name on the mailbox

Please go to the inspector's office during the opening hours to get your name on the mailbox. This is important if you want to receive your mail.

## General rules

- ✓ Please note that meals and cleaning of your room is not included in the rent.
- ✓ You **may reorganise the furniture**, but always put it back as you found it when you moved in. **Do not remove** inventory from the room, and please take care of it during your stay.

- ✓ **Never make holes** in the walls, or other permanent or semi-permanent changes.
- ✓ **You may not smoke** in your room or in any common areas.
- ✓ Note that **fireworks are not allowed**.

## Thoughtful behaviour

**Be social – be helpful – be tolerant** - this will help you all have a good experience.

### Heating, water and electricity

You are expected to keep consumption of heating, water and electricity at a reasonable level according to the Danish Government Energy Guidelines. This means:

- ✓ Normal indoor temperature is 20-22° C
- ✓ You should **never open windows and turn on the heating at the same time**. Always **turn off the lights** when leaving a room, even for short periods
- ✓ **Do not leave the water running** for longer periods
- ✓ Turn down the heating when you leave the room for longer periods and at night

### Noise

Radios, sound systems, musical instruments and other noisemaking machines or equipment may only be used if the necessary respect is shown for the other inhabitants and never with the windows open. **Please keep quiet between 22.00 and 8.00 hrs.**

### Minimize risk of theft

- ✓ To ensure the residents' security, all outside **doors must be locked all the time**.
- ✓ When leaving your room, make sure that all windows are closed. Remember that your possessions, as well as everybody else's, will not be covered by insurance if there is a break-in and it is found that the windows or doors were not locked.
- ✓ You are responsible for taking out **your own insurance** while staying at the premises.

## Cleaning and maintenance

**PLEASE NOTE:** The water in Denmark and in the Copenhagen-area in particular, is very hard; it contains **a lot of limestone**. Make sure to decalcify electric water kettles with vinegar or acetic acid, and use an acidic cleaning solution when cleaning the bathroom and kitchen.

Please **organise a cleaning schedule** of the common areas with your neighbours. In general it is good practice to at least follow the following in the kitchen:

- ✓ Please **do your own dishes** with soap and hot water, and put the utensils back in their places.
- ✓ Please remember to **wrap your food** in the refrigerator, and dispose of food that is no longer fresh.

## Bathrooms

- ✓ Throw only toilet paper into the toilet in order not to clog the drain.
- ✓ Remove hair from the drain cover after every shower to avoid clogging.
- ✓ Use a drain cleaner (a plunger or an alkaline solution like “afløbsrens”) in case the drain is not working properly.

## Garbage/waste

- ✓ Do not leave garbage in your room or in common areas. Take out the bag immediately and put it in the right container. It is not allowed to leave garbage on the ground outside!
- ✓ Please condense all garbage as much as possible (flatten cartons and other containers, for example). The garbage collectors will only collect a set amount of garbage each week, and there is no way to dispose of any surplus.
- ✓ Please note that glass bottles, paper and cardboard should be put in special containers.
- ✓ Batteries and hazardous waste should also be put in special containers.
- ✓ Garden waste must be placed at the parking lot by Matrielgården.
- ✓ Aluminium cans to be returned to the office or in separate bags in the garbage sheds.

## Laundry facilities

You will find the entrances to laundry facilities between buildings:

3 and 5  
26 and 28  
32 and 34  
50 and 52

There are 6 machines in each laundry room – 24 in total.

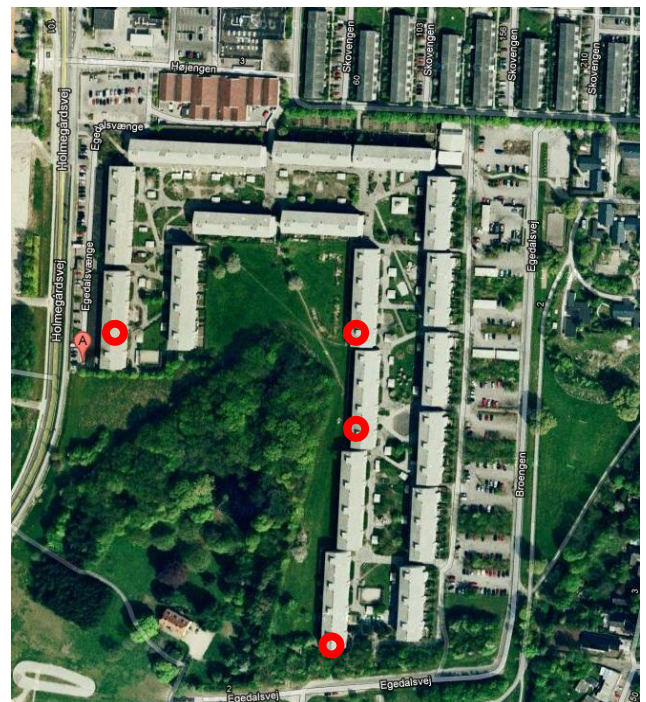
First time you do your laundry you have to physically go to the laundry room and book a machine, and then you will be registered as a new user and will be able to book via the website [www.saniva.dk](http://www.saniva.dk)

## Prices

Washing machine 8 kg: DKK 9  
Washing machine 12 kg: DKK 11  
Dryer: DKK 0.25 per minute

## Internet

You will have a **wireless router** in your room. Login information will be in your room when you arrive – if **problems, contact YouSee service** (internet provider) at: **70704040** or contact the DTU Accommodation Office.



## Inventory

In your room you should find the most basic furniture: a bed, a desk, a chair, a bookshelf, and a wardrobe or a clothing rack.

The previous tenant might have left extra inventory or stuff that might be useful to you (like cleaners or an extra chair). Keep what you find useful and throw the rest out.

Check the condition of the light bulbs and the furniture when you first move in. In case some of the **inventory is damaged**, please inform the Accommodation Office, so it can be replaced. Please note that only the basic furniture provided by the Accommodation Office will be replaced by us.

**NOTE:** All light bulbs, cleaning equipment, toilet paper, etc. that you use throughout your rental period will not be provided by or paid for by the Accommodation Office!

## Extra facilities at Egedalsvænge

If you are in doubt of anything, for instance how does the laundry work, or any other questions, you are welcome to contact the association board or the inspector's office, and they will help you the best they can. You need to contact the **inspector office** if your **faucet is leaking**, your **fan does not work**, or other problems in your apartment.

### Drill:

You can borrow a special drill for drilling through concrete at the office. Security deposit of DKK 200 has to be paid. **If you return the drill too late, it is DKK 100 extra per day**

**You can borrow a gate bar key at the office.**

### Security deposit is DKK 1000

- ✓ Because of fire hazard, it is not allowed to place items in the stairway (bicycles, etc.).
- ✓ A key to the bicycle rooms can be rented at the office against a security deposit of DKK 300.
- ✓ As the public is not allowed to drive in the courtyard with private cars, a special permit is required. You can pick one up at the office.

### Gardening tools

You can borrow gardening tools. In the tool shed you will find everything you need for gardening. It may be a good idea to call to reserve tools. Please contact Dorthe Chisholm. Tel: 51 70 76 88. There is a security deposit of DKK 200.

**Website (for information about inspector's office, clubs, activities, etc.):**

<http://egedalsvaenge.3b.dk/egedalsvaenge/forside>

## House guests/visitors

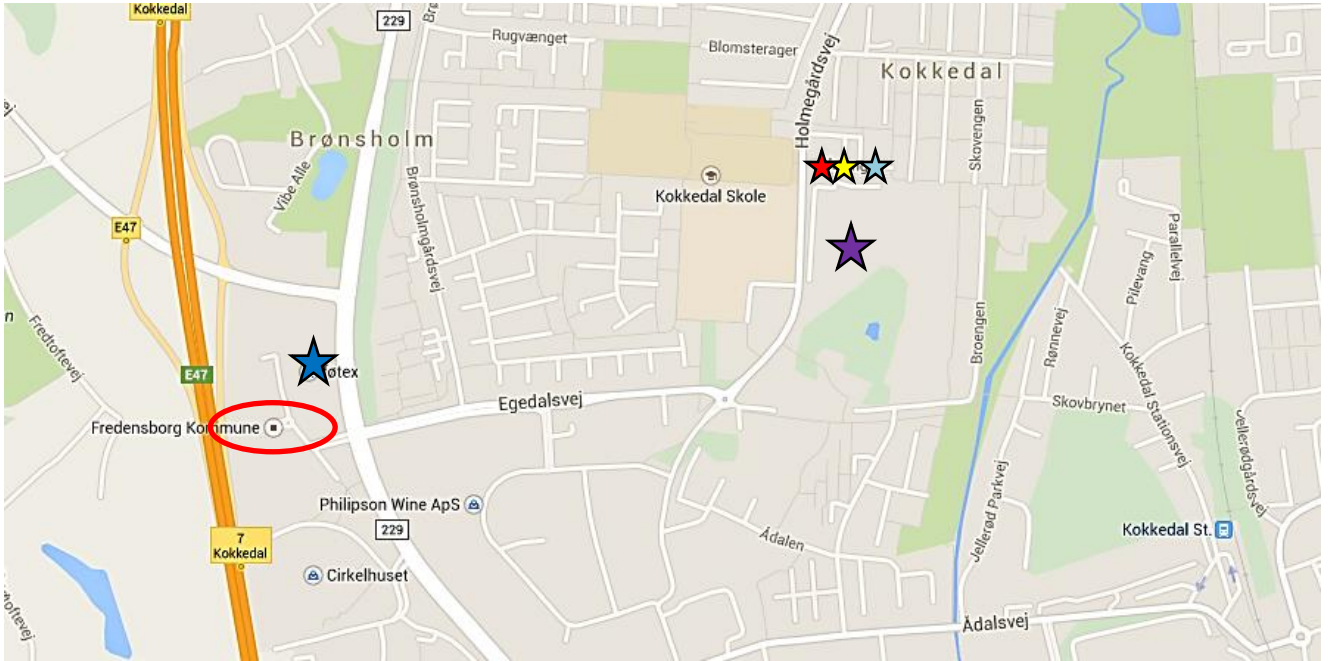
When you have guests/visitors, it is your responsibility that you are quiet from 22:00 until 8:00.

## Bicycles

Bicycle racks are present in the area. Please use them to park your bike. It is not allowed to bring your bicycle indoors!

**Please note, that storage of items/shoes, etc. in the hallways is strictly forbidden due to fire regulations!**

## Shopping in the area



★ **Your accommodation**

★ **Netto** Højengen 10 (Holmegårdscentret), 2980 Kokkedal (<500 m)  
(7 days a week from 8-20)

★ **Fakta** Højengen 3 (Holmegårdscentret), 2980 Kokkedal (<500 m)  
(7 days a week from 8-20)

★ **Føtex** Egevangen 4, 2980 Kokkedal (2 km)  
(7 days a week from 8-21)  
**REMA 1000** Egevangen 4, 2980 Kokkedal (2 km)  
(7 days a week from 8-21)

★ **Aldi** Højengen 12 (Holmegårdscentret), 2980 Kokkedal (<500 m)  
(Mon.-Fri.: 8-20, Sat.-Sun.: 8-18)



Fredensborg Municipality (CPR number registration etc.)



## The discount shops

Discount shops only have a limited choice of articles. Often they only have one type of each article. Still you should be able to find the most common brands of every article and fresh vegetables, milk, meat and fish.

Name	Location
Aldi	Højengen 12
Fakta	Højengen 3
Netto	Højengen 10
Rema 1000	Egevangen 4

**Other discount shops:** Lidl



## Medium price shops

The medium price shops differ from the discount shops by having a greater variety of articles. Usually the shops have the most common brands as well as some special brands. You will find fresh vegetables, milk, meat, and fish etc. In some shops you will find homemade bread. The selection of organic products is bigger than in the discount shops.

Name	Location
Føtex	Egevangen 4
SuperBrugsen	Hørsholm Midtpunkt, 2970 Hørsholm
DøgnNetto	Kollegiebakken 7, 2800 Kgs. Lyngby (on DTU campus)

**Other medium price shops:** Meny



## High price shops

The price level is a little higher than the above mentioned shops and they differ by having more specialties. Typically they have their own luxury brands next to the more common brands.

Name	Location
Irma	Hørsholm Midtpunkt 71, 2970 Hørsholm
Magasin	Kongens Nytorv (inner city of Copenhagen) Kgs. Lyngby (2 km from DTU)

## Useful food dictionary

### Danish

#### Brød

Franskbrød  
Rugbrød  
Grovbrød  
Boller  
Wienerbrød  
Kiks

#### Mejeriprodukter

Mælk  
Sødmælk  
Letmælk  
Skummetmælk  
Kærnemælk  
Kaffefløde  
Piskefløde  
Yoghurt  
A 38  
Creme Fraiche  
Tykmælk  
Smør  
Margarine  
Plantemargarine

#### Drikkevarer

Te  
Kaffe  
Øl  
Sodavand  
Juice  
Saftevand  
Kildevand  
Almindeligt vand

#### Pålæg

Skinke  
Spegepølse  
Ost  
Leverpostej  
Kød og fjerkræ  
Oksekød  
Hakket oksekød  
Kalvekød  
Svinekød  
Hakket kalv og flæsk  
Lammekød  
Lammekølle  
Kylling  
Kalkun  
Hakket kalkun

#### Frugt og grønt

Appelsin  
Æble  
Pære  
Banan  
Vindruer

### English

#### Bread

White bread  
Rye bread  
Brown bread  
Buns/rolls  
Danish pastry  
Biscuits

#### Dairy products

Milk  
Whole milk  
Semi-skimmed milk  
Skimmed milk  
Buttermilk  
Cream  
Whipping cream  
Yoghurt  
Sour milk  
Sour cream  
Junket  
Butter  
Margarine  
Vegetable margarine

#### Beverages

Tea  
Coffee  
Beer  
Soft drink  
Juice  
Cordial  
Spring water  
Plain water

#### Cold cuts/spreads

Ham (pork)  
Salty sausage (pork)  
Cheese  
Liver paté (pork)  
Meat and poultry  
Beef  
Minced beef  
Veal  
Pork  
Minced pork & veal  
Lamb  
Leg of lamb  
Chicken  
Turkey  
Minced turkey

#### Fruit and vegetables

Orange  
Apple  
Pear  
Banana  
Grapes

### Danish

Tomat  
Agurk  
Salat  
Spinat  
Kartofler  
Gulerødder  
Løg  
Hvidløg  
Ærter  
Bønner  
Champignon  
Blomkål  
Hvidkål

#### Fisk

Tun  
Laks  
Torsk  
Rødspætte  
Ørred  
Rejer

#### Krydderier

Sukker  
Salt  
Peber  
Karry  
Kanel  
Ingefær  
Timian  
Oregano  
Basilikum  
Nelliker  
Muskatnød  
Anis/stjerneanis  
Chili  
Paprika  
Kardemomme

#### Diverse

Pasta  
Nudler  
Mel  
Ris  
Rismel  
Majs  
Majsmel  
Olie  
Olivenolie  
Vindrukerneolie  
Solsikkeolie  
Salatolie  
Æg  
Gær  
Is

### English

Tomato  
Cucumber  
Lettuce  
Spinach  
Potatoes  
Carrots  
Onion  
Garlic  
Peas  
Beans  
Mushroom  
Cauliflower  
White cabbage

#### Fish

Tuna fish  
Salmon  
Cod  
Plaice  
Trout  
Shrimps

#### Spices

Sugar  
Salt  
Pepper  
Curry  
Cinnamon  
Ginger  
Thyme  
Oregano  
Basil  
Cloves  
Nutmeg  
Aniseed  
Chilli  
Paprika  
Cardamom

#### Miscellaneous

Pasta  
Noodles  
Flour  
Rice  
Rice flour  
Maize/corn  
Maize flour  
Oil  
Olive oil  
Grapeseed oil  
Sunflower oil  
Salad oil  
Egg(s)  
Yeast  
Icecream/Ice

## The local area

Kokkedal is a city quarter of Hørsholm in the northern part of Sjælland. Kokkedal has a population of about 10,000 people. It lies 20 km south of Helsingør and 30 km north of Copenhagen.

The coast line trains stop at Kokkedal station, which lies 1 km from the accommodation.

## Cafés and restaurants

Cafés and restaurants can be found in Holmegårdscentret.

## Cultural spots

**Cinemas:** No cinemas are in walking distance from Kokkedal. There are cinemas in the surrounding cities like Helsingør ([www.cinamcenter.dk](http://www.cinamcenter.dk)), Birkerød ([www.birkerøedbio.dk](http://www.birkerøedbio.dk)) and Hillerød ([www.nfbio.dk/hilleroed](http://www.nfbio.dk/hilleroed)).

## Public libraries

The closest library is the one on Kokkedal Skole, on Holmegårdsvej 101-102 about 500 meters away ([www.fredensborgbibliotekerne.dk/bibliotek/kokkedal-cafebibliotek](http://www.fredensborgbibliotekerne.dk/bibliotek/kokkedal-cafebibliotek)).

### *Opening hours*

Tuesday: 10-15

Thursday: 10-15

## Sports facilities

As a student at DTU, you can join DTU Sport and DTU Fitness. The price for a DTU Fitness membership which includes bodybike (spinning) is currently 500 DKK for one semester.

The fitness room at DTU includes:

- Treadmills, cross trainers and stationary bicycles
- Rowing machines
- Kettlebells and dumbbells
- Eleiko and Leiko barbells
- Eleiko weight plates
- Squat racks/cages

Various sports are represented at DTU Sport. Some of these are:

- Football (soccer)
- Basketball
- Rugby
- Badminton
- Volleyball
- Climbing (bouldering)
- Diving

The website of DTU Sport can be found at [www.sport.dtu.dk/Engelsk/](http://www.sport.dtu.dk/Engelsk/) and contains more information.

Other sports facilities in the local area include:

- Fitness World – Egevangen 4  
[www.fitnessworld.dk](http://www.fitnessworld.dk)
- Form & Figur – Christianshusvej 4, Hørsholm (2 km from Egedalsvænge)  
[www.formfigur.dk](http://www.formfigur.dk)

## Transport

In Denmark we love to ride our bicycles and this is our favourite type of transportation – especially for students, since the public transportation in Denmark is very expensive!

### Bicycle

The Greater Copenhagen area has some very good bike paths and is generally very bicycle-friendly.

Please note that **it is mandatory to have lights on your bicycle from dusk until dawn**. Failure to comply with this may result in a fine of 700 DKK. A bike helmet is not mandatory, but recommended.

#### Where to get a bike

##### *Used bikes*

Ask around or look for students posting bike sales on **CampusNet**, **Facebook** or the “**buy and sell**” section on **Portalen**. Some shops such as [BrugteCykler.dk](http://BrugteCykler.dk) sell second hands bikes. Other popular options are:

- ✓ **Den Blå Avis** or **Gul & Gratis**- lots of privately sold used bikes. These newspapers are published in Danish, so ask a Danish-speaking person for help or use Google translate. [www.dba.dk](http://www.dba.dk) and [www.guloggratis.dk](http://www.guloggratis.dk)
- ✓ The **Police bicycle auctions** in Copenhagen. The auctions are held by Lauritz.com (you can bid online). The bikes are located in the auction room on Slotsherrensvej 113 in Vanløse. Be aware that the bikes are sometimes in lousy condition and need quite a bit of money to fix. Payment can be done online on Lauritz.com.

##### *New bikes*

You can get a new bicycle from **bike shops** or **supermarkets and hardware shops** such as Kvickly, Super Brugsen, Føtex and Harald Nyborg.

### Car

If you bring your car to Denmark you need to register the car at SKAT, if you are staying here for **more than 185 days** –you can find the correct form on their website: [www.skat.dk](http://www.skat.dk)

If you stay here **less than 185 days**, you do not need to do anything, but **keep a documentation of your period** in Denmark (e.g. your rental agreement) in the car.

#### Parking

Parking in inner city areas in Denmark usually costs money. Payment for parking is done in a parking meter and a parking ticket must be placed in the windscreen.

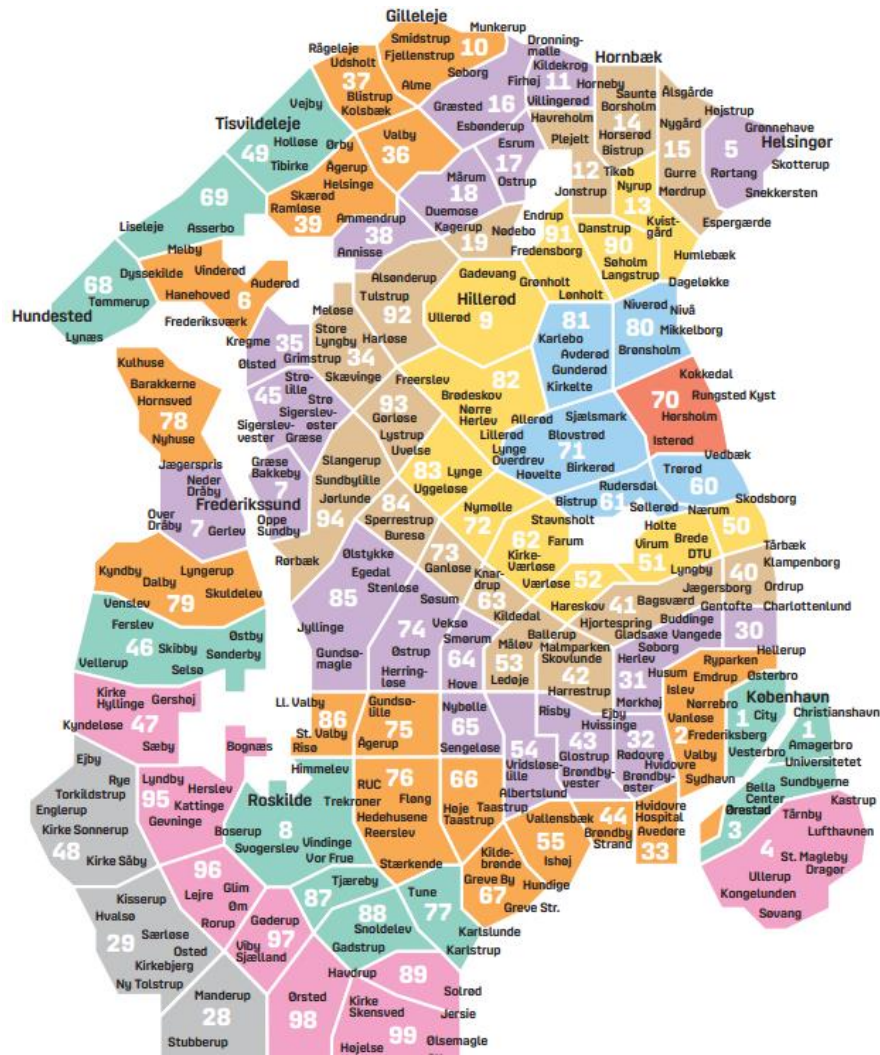
In other areas parking is usually free, but often time-limited. For this purpose you'll need to purchase a **parking disc**. Parking discs are available at tank stations and hardware shops and need to be attached to the inner surface of the windscreen in the passenger (right hand) side of the car.

- ✓ The parking disc should be set to the **time you arrive**. E.g. if you park your car at 10:13 am, you should make sure the arrow of the parking disc is pointing at 10:15.

## Busses and trains – The Zone system

The greater Copenhagen area is separated into transportation zones. The number of zones that you pass through on your travel determines the price of your public transport ticket.

Egedalsvænge is located in zone 70. An overview of the zones in the greater Copenhagen area is shown below. Note that the map is based on a location in zone 70.



Getting from the airport (zone 4) to Egedalsvænge is eight zones and getting from Egedalsvænge to the inner city in Copenhagen (zone 1) is seven zones. You start counting in the zone you're in.

### Tickets

Different types of cash payments exist. You can buy **single tickets** in the bus or at train/metro stations. It is also possible to buy an electronic card called **Rejsekort** (English: travel card). Travelling by using a Rejsekort means that you must check in at the beginning of your travel and everytime you change bus/train, and remember to check out again at the end.

Two types of Rejsekort exist: personal and anonymous. The personal rejsekort gives the largest discounts, but you have to order it online and receive it by mail. The anonymous rejsekort can be bought at various vendors and can be used immediately.

More information about the rejsekort can be found on [www.rejsekort.dk](http://www.rejsekort.dk)

### **Ungdomskort**

As a student at a university in Denmark, you are eligible to receive an Ungdomskort (Youth card). An Ungdomskort costs 20.22 DKK pr. day. Usually you pay for a month at a time, which means that it costs **around 615 DKK pr. month**. An Ungdomskort allows you to **travel freely in all zones** in the Copenhagen area in the valid time period. It is valid in busses, S-trains, metro, etc.

Once the SU office at the Technical University of Denmark has approved you as a student, you can apply for an Ungdomskort at [www.ungdomskort.dk](http://www.ungdomskort.dk)

### **Types of public transport**

All S-train stations can be easily found by looking for the big red sign with a white S: 

#### ***S-tog (S-trains)***

The S-tog system is more or less like the Underground in London or the Metro in Paris. The difference is that the trains do not drive underground (except for between Østerport and Vesterport).

During rush hour, trains run with 10 minute intervals. At other times, they run with 20 minute intervals.

You can bring your bicycle with you on the S-trains (not Metro) for free, but note that you may not get on or off trains with your bicycle on Nørreport st. during rush hour!

#### ***Metro***

The metro runs mainly underground. The metro trains are automatic and run every 2-3 minutes during rush hour and every 5 minutes at other times.

Bicycles are not allowed on the Metro during rush hour!

#### ***Busser (busses)***

Numerous bus lines exist in Copenhagen and the surrounding area. For an overview (unfortunately only in Danish) check out [www.moviatrafik.dk/dinrejse/kort/Pages/Kort.aspx](http://www.moviatrafik.dk/dinrejse/kort/Pages/Kort.aspx)

#### ***General***

Whenever you are planning a trip, we recommend that you check out [www.rejseplanen.dk](http://www.rejseplanen.dk) to plan your trip, get door-to-door directions and find price information.



**The Metro in Copenhagen**

## **Moving out**

Sometime before you move out you will receive a **“moving out”-email**, letting you know all you need to do when you move out. In general you need **to clean the entire room thoroughly** and return a **“Deposit”-form** (attached in the “moving out”-email).

When you have left your room and your **keys are returned** to the accommodation office, we will check your room for any damages or lack of cleaning – if everything is fine we will proceed with paying back your deposit after checking that all your payments are in order and that we have received your deposit form. The process usually takes between 4-8 weeks from everything is handed over to us and till you have the money in your account.

## **Change your moving out date**

### **Cancellation:**

If you get a contract for two semesters, please note: even though the rental agreement is binding for the full period stated in your contract, the Accommodation Office may be able to accept a cancellation for the 2nd semester accommodation. If you wish to request a cancellation, please inform us before May 1<sup>st</sup> for cancelling the following Fall semester or November 1<sup>st</sup> for cancelling the following Spring semester, and we will do our best to find another student to take over the lease of your accommodation.

### **Extend your contract:**

As a rule, we cannot grant extensions because of the tight housing market in the Copenhagen Area. However, as soon as you know that you would like to stay here longer, you should make a request at the Accommodation Office for an extension, and we will see what we can do.

## Tips and Tricks from a former resident/DTU student

Dear reader,

Here you will find tips regarding life as a student in Kokkedal, from a student's observations after having lived there for a year. Kokkedal is a beautiful yet remote place, but comes with many good sides and advantages that you will possibly miss should you move to the city later. Egedalsvænge, where the apartments are located, is a generally peaceful area where usually the biggest trouble is kids doing graffiti or throwing firecrackers.

On to the tips:

### Inspector

For any problems with the apartment, borrowing a drill or asking questions, the inspector's office is there for you (Inspektorkontor). It is open every morning, so go there to avoid spamming the accommodation office ;). The office is located at the far bottom corner of the complex, near Netto. They are also responsible for changing your name on the mailbox.

### Laundry

Ah, laundry, the bane of the DTU student! Operating these machines is actually quite simple. First, you use your blue key at the touchscreen to 'buy' a washing machine for 1.5 hour. After putting your clothes in the washing machine, put a washing tablet or powder and close the door. After that, pressing '40' and powering it up is usually good enough, however you can also use the 'Finvask' option which takes longer but is gentler (for delicates), the 'Express' for faster washes, or you can also lower the temperature.

When it comes to the dryer, this tip is quite important, as this machine LOVES destroying clothes if you choose to press the 'double sun' option. Don't use it! In most cases, depending on the load, the '1 waterdrop' option is good enough. Manually setting it to 15 minutes works as well. However if you have a woolen shirt, or a shirt with a very delicate stamp, it is advisable to air dry them instead.

You can reserve machines from your apartment by going on [saniva.dk](http://saniva.dk), selecting Vasketur and then Egedalsvænge, but that is not necessary. However most people wash on Sundays, so it is advisable to reserve then.

### Transportation

Buses and trains from and to Kokkedal are quite frequent and well kept, despite the remote location. Your best friend is going to be the bus 150S at the Egedal Kirke stop. [Rejseplanen.dk](http://Rejseplanen.dk) works very well, and the buses are almost always on time (1 minute early even!).

If you live in the further part of Egedalsvænge (near Netto), you can save 1-2 minutes of walking by going through the pedestrian path, that goes from the middle of the complex and through the trees – use it, but not in rainy days!

If you are looking to go to the city, the trains will get you there much faster, especially the ones that only stop in Hellerup. However, if you own a travel card and a rejsekort, as of the time of writing this

page, you cannot combine them. The only way around this is to get out at Skodsborg St and check in there and quickly get back in the train, but that will save you one zone... almost not worth the trouble. Maybe talking to the ticket inspector will provide a better solution.

If you're looking to go to Lyngby, the best way is to get the 150S and get off at the Klampenborgvej/Hgør. Motorvej and then walk a few minutes down the road towards Lyngby. This way you don't have to pay an extra fare as it's still on the 51 zone.

## **Food**

When it comes to buying groceries, Netto is usually the cheapest. Fakta carries a bigger variety of products, but if you want a really outstanding (and pricier!) supermarket, you can stop at Fredensborg Rådhus bus stop and visit the Føtex there. The REMA next to it remains open until 9 pm, for the late buyers. The DognNetto at DTU saves lives as well, but is usually more expensive.

The Kebabstationen at the Kokkedal train station is famed to be one of the best kebab places in Copenhagen, however the nearby 'Cantinos' makes pretty decent food for when you're too tired to cook as well. Yes, you should be cooking!

## **Leisure**

There are some great walking/running paths if you follow the road towards the sea, if you are into running. Following this road will get you to the supermarket that also works as a post office, for picking up parcels sent to you. Further down this road is an amazing little forest, and eventually the sea, which is unfortunately usually dirty, but still worth the walk.

The local pub owner is a great person, should you choose to have a beer.

The local hairdresser is decent at her work; however, her prices are in the Danish standard. If you want cheaper haircuts, your best bet is the hairdresser schools in central Copenhagen.

This concludes the Kokkedal hints and tips guide! I wish you all a great stay in Kokkedal and Denmark, and remember, how good of a time you are going to have is entirely up to you!

## Contact information

### Internet – provider: YouSee

Opening hours:

**Monday-Friday: 08.00-20.00**

**Weekend/Holidays: 10.00-20.00**

E-mail: [kundeservice@yousee.dk](mailto:kundeservice@yousee.dk)

Phone: +45 70 70 40 40

Contact them in case of internet problems.

### Inspector Office

You can find the inspector at **Egedalsvænge 37**.

Opening hours:

**Monday-Friday 08.00-11.00.**

**Wednesday 17.00-18.00**

**Phone: +45 49 14 73 34**

Contact them in case of maintenance problems (ex. Stove not working, no hot water)

Use the phone number below in case of emergencies in your building during weekends/nights (for instance, sewage spill or busted water pipe, stuff that absolutely cannot wait until opening hours):

**Phone: +45 23 66 22 48**

### Accommodation Office

Our opening hours:

**Monday-Friday 10.00-14.00,**

E-mail: [acco@adm.dtu.dk](mailto:acco@adm.dtu.dk).

Contact us in case interior is missing or broken (chair, desk, bed, curtains), or anything regarding your rental agreement and payment.

## **In case of emergency contact**

Police, fire department, ambulance **Phone 112**

**The police** in Hørsholm (the phone number is general for the police nationwide)

Hørsholm Alle 4  
2970 Hørsholm

Phone: 114 (for minor emergencies that the police can handle)

### **Acute Phone**

If you are in doubt of what to do in a medical emergency, you can call 1813 and nurses will be ready to assist you. Please notice, that it is usually not possible to go the emergency room without calling 1813 beforehand.

**Phone: 1813**

### **Non-Danish mobile phone services**

If you are using a mobile phone service established outside of Denmark, please remember to use **Denmark's country code +45** before dialling 1813.

### **Nurses especially trained to help you**

The 1813 help line is staffed by specially trained nurses who will be able to tell you at once what to do next: whether to contact your doctor (GP) or go to your local emergency room or urgent care clinic. In case of the latter, you will also be told the address of the clinic with the shortest waiting time.

### **Cutting waiting time**

The Capital Region wants to ensure that your call does not go unanswered for more than two minutes. When your call is answered there will be plenty of time for you to explain what has happened and for you to be given a thorough answer.

### **The help line is always staffed**

The help line is staffed round the clock, 365 days a year, and no question is too large or small.

**Hospital** in Hillerød (The closest one to Egedalsvænge)

Nordsjællands Hospital  
Dyrehavevej 29  
3400 Hillerød  
Phone: +45 48 29 46 00

### List of signs

- Departments
- Oticon Hall
- Administration
- Campus Service
- Residential halls and guest houses
- SCION. DTU
- Instructional buildings
- Bus stop
- Canteen
- University Library



**15**  
LUNDTOFTE  
HJORTEKER

Elsinore

Jægersborg  
Dyrehave

E47  
E55

**16**

Klampenborg/  
Strandvejen

Copenhagen

0 100 200 300 400 500 meter